

MVSS



CESI KIE



2 poles - 3000/3600 rpm

Description		Mechanical specifications										Electrical specifications				
Code	Type	SIZE	SA*	Static moment* kgmm		Centrifugal force				Weight kg		Max input power W		Max. current A		
				50 Hz	60 Hz	50 Hz	60 Hz	50 Hz	60 Hz	50 Hz	60 Hz	50 Hz	60 Hz	400 V 50 Hz	460 V 60 Hz	
three-phase	600328	MVSS 3/100-S02	00	•	12.0	12.0	121	174	1.19	1.71	7.80	7.80	180	180	0.35	0.30
	600329	MVSS 3/200-S02	01	•	21.0	15.0	211	218	2.07	2.14	8.20	8.00	180	180	0.35	0.30
	600330	MVSS 3/300-S02	10	•	30.1	20.4	304	297	2.98	2.91	12.5	12.0	260	270	0.60	0.50
	600331	MVSS 3/500-S02	20	•	49.9	32.4	503	471	4.93	4.62	18.5	17.5	450	500	0.80	0.75
	600515	MVSS 3/800-S08	30	•	78.0	52.0	785	754	7.70	7.40	25.0	24.0	650	685	1.10	1.00
	600333	MVSS 3/1100-S02	35	•	110	73.0	1105	1061	10.8	10.4	30.0	29.0	1000	1200	1.75	1.75
	600334	MVSS 3/1510-S02	40	•	153	102	1545	1483	15.2	14.5	39.6	38.0	1400	1450	2.30	2.00
	600335	MVSS 3/2010-S02	50	•	205	128	2059	1853	20.2	18.2	48.7	46.3	2200	2200	3.50	3.00
single-phase	600328	MVSS 3/100-S02	00	•	12.0	12.0	121	174	1.19	1.71	7.80	7.80	165	165	0.75	1.52
	600329	MVSS 3/200-S02	01	•	21.0	15.0	211	218	2.07	2.14	8.20	8.00	165	165	0.75	1.52
	600330	MVSS 3/300-S02	10	•	30.1	20.4	304	297	2.98	2.91	12.5	12.0	280	280	1.25	2.40
	600331	MVSS 3/500-S02	20	•	49.9	32.4	503	471	4.93	4.62	18.5	17.5	500	500	2.30	4.50
	600515	MVSS 3/800-S08	30	•	78.0	52.0	785	754	7.70	7.40	25.0	24.0	700	750	3.25	7.00

* Working moment = 2 x static moment.

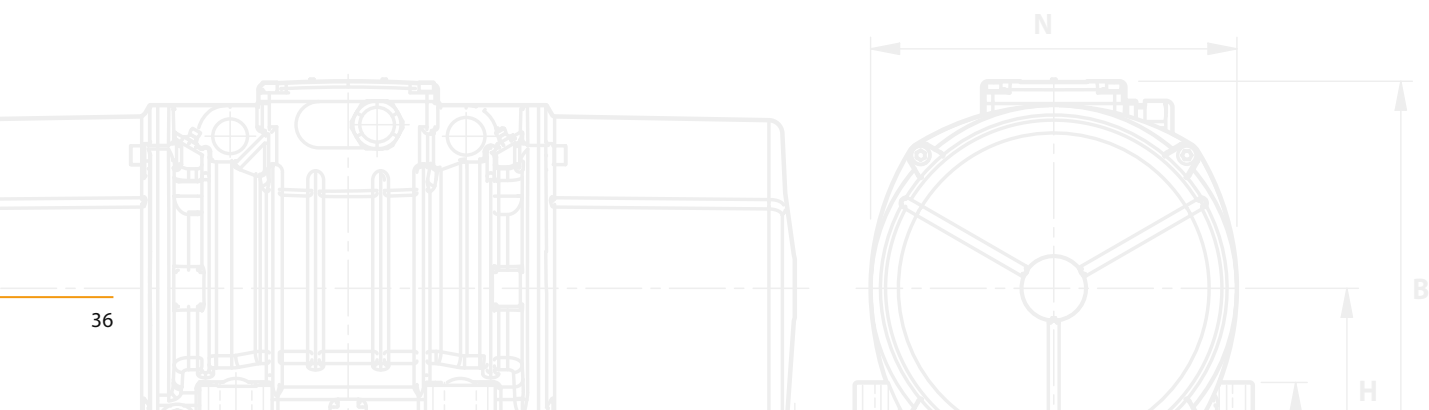
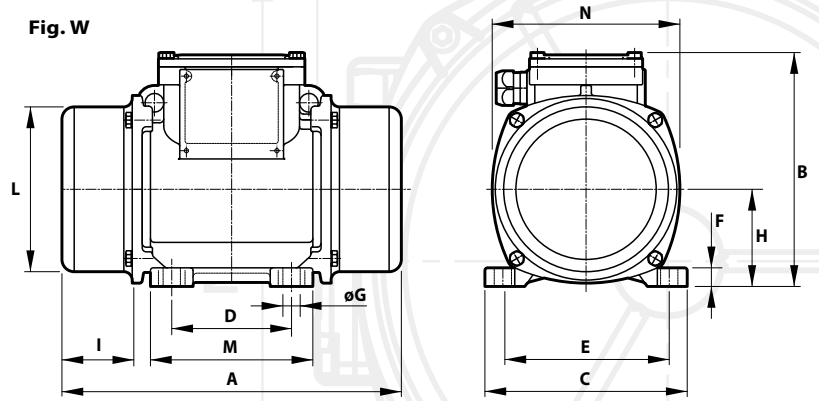


Fig. W



Dimensional specifications (mm)

I _A /I _N		Type	Fig.	A	B	C	D	E	Holes			F	H	I	L	M	N	Capacitor (µF)		Cable entry thread
50 Hz	60 Hz								øG	N°	220 V 50 Hz							115 V 60 Hz		
2.68	3.00	MVSS 3/100-S02	W	209	151	125	62-74**	106	9	4	10	61	45	100	102	117	-	-	M20x1.5	
2.68	3.00	MVSS 3/200-S02	W	225	151	125	62-74**	106	9	4	10	61	53	100	102	117	-	-	M20x1.5	
3.47	4.20	MVSS 3/300-S02	W	255	176	152	90	125	13	4	12	73	54	124	122	141	-	-	M20x1.5	
4.21	4.80	MVSS 3/500-S02	W	284	200	167	105	140	13	4	15	82.5	63	143	137	160	-	-	M25x1.5	
3.83	6.00	MVSS 3/800-S08	W	308	205	205	120	170	17	4	17	93.5	63	168	160	182	-	-	M25x1.5	
3.63	4.00	MVSS 3/1100-S02	W	354	232	205	120	170	17	4	20	104.5	77	181	162	203	-	-	M25x1.5	
4.95	6.12	MVSS 3/1510-S02	W	438	245	230	140	190	17	4	25	116	103	201	180	225	-	-	M25x1.5	
4.62	6.00	MVSS 3/2010-S02	W	438	245	230	140	190	17	4	25	116	103	201	180	225	-	-	M25x1.5	
1.67	2.24	MVSS 3/100-S02	W	209	151	125	62-74**	106	9	4	10	61	45	100	102	117	10	28	M20x1.5	
1.67	2.24	MVSS 3/200-S02	W	255	151	125	62-74**	106	9	4	10	61	53	100	102	117	10	28	M20x1.5	
2.48	3.52	MVSS 3/300-S02	W	255	176	152	90	125	13	4	12	73	54	124	122	141	16	25	M20x1.5	
3.35	4.22	MVSS 3/500-S02	W	284	200	167	105	140	13	4	15	82.5	63	143	137	160	12.5	50	M25x1.5	
4.00	4.14	MVSS 3/800-S08	W	308	205	205	120	170	17	4	17	93.5	63	168	160	182	25	90	M25x1.5	

I_A/I_N = ratio between start-up current and maximum current. ** Slot.

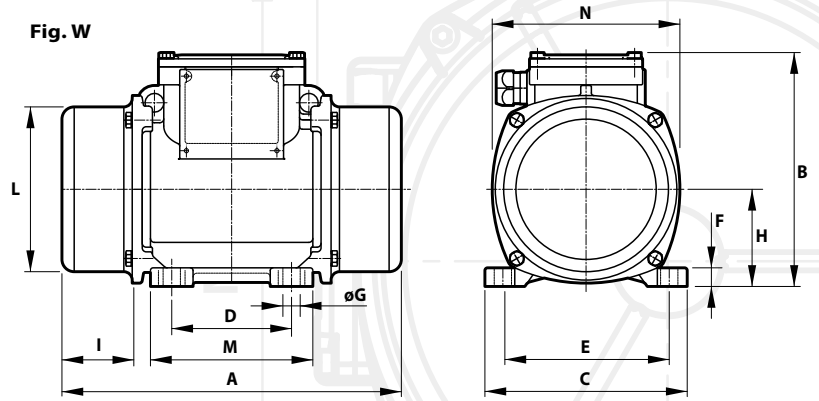
4 poles - 1500/1800 rpm

Description				Mechanical specifications								Electrical specifications				
Code	Type	SIZE	SA*	Static moment* kgmm		Centrifugal force				Weight kg		Max input power W		Max. current A		
				50 Hz	60 Hz	50 Hz	60 Hz	50 Hz	60 Hz	50 Hz	60 Hz	50 Hz	60 Hz	400 V 50 Hz	460 V 60 Hz	
three-phase	601342	MVSS 15/35-S02	00	•	12.0	12.0	30.2	43.5	0.30	0.43	7.80	7.80	85	95	0.21	0.20
	601343	MVSS 15/80-S02	01	•	31.0	21.0	77.9	76.1	0.76	0.75	9.00	8.70	85	95	0.21	0.20
	601365	MVSS 15/100-S02	01	•	38.9	31.0	97.9	112	0.96	1.10	9.40	9.00	85	95	0.21	0.20
	601344	MVSS 15/200-S02	10	•	84.2	58.8	213	214	2.09	2.10	15.8	15.0	170	170	0.41	0.40
	601345	MVSS 15/400-S02	20	•	163	113	412	411	4.04	4.03	22.5	21.7	300	350	0.60	0.60
	601346	MVSS 15/550-S02	20	•	219	163	552	592	5.42	5.81	23.9	22.5	300	350	0.60	0.60
	601526	MVSS 15/700-S08	30	•	286	209	720	760	7.06	7.46	32.0	30.7	525	665	0.92	0.98
	601348	MVSS 15/1100-S02	35	•	415	271	1045	982	10.3	9.63	42.0	37.5	550	680	0.95	0.95
	601349	MVSS 15/1410-S02	40	•	561	400	1413	1449	13.9	14.2	53.0	50.0	900	1050	1.45	1.50
	601350	MVSS 15/1710-S02	50	•	715	485	1798	1757	17.6	17.2	58.5	54.5	1100	1200	2.00	1.90
	601351	MVSS 15/2000-S02	50	•	817	561	2054	2033	20.1	19.9	70.0	68.0	1350	1450	2.50	2.30
	601352	MVSS 15/2410-S02	60	•	962	674	2420	2444	23.7	24.0	82.0	76.0	1600	1700	3.20	3.00
	601353	MVSS 15/3000-S02	60	•	1235	858	3106	3107	30.5	30.5	92.0	89.0	1900	2000	3.80	3.50
	601354	MVSS 15/3810-S02	70	•	1526	1034	3840	3744	37.7	36.7	115	110	2200	2500	3.90	3.90
	601363	MVSS 15/4300-S02	70	•	1720	1173	4326	4250	42.4	41.7	122	117	2500	2800	4.80	4.65
single-phase	601342	MVSS 15/35-S02	00	•	12.0	12.0	30.2	43.5	0.30	0.43	7.80	7.80	90	100	0.43	1.00
	601343	MVSS 15/80-S02	01	•	31.0	21.0	77.9	76.1	0.76	0.75	9.00	8.70	90	100	0.43	1.00
	601365	MVSS 15/100-S02	01	•	38.9	31.0	97.9	112	0.96	1.10	9.40	9.00	90	100	0.43	1.00
	601344	MVSS 15/200-S02	10	•	84.2	58.8	213	214	2.09	2.10	15.8	15.0	210	230	1.00	2.00
	601345	MVSS 15/400-S02	20	•	163	113	412	411	4.04	4.03	22.5	21.7	240	320	1.20	2.80
	601346	MVSS 15/550-S02	20	•	219	163	552	592	5.42	5.81	23.9	22.5	240	320	1.20	2.80
	601526	MVSS 15/700-S08	30	•	286	209	720	760	7.06	7.46	25.0	23.0	450	550	2.15	5.15

* Working moment = 2 x static moment.



Fig. W



Dimensional specifications (mm)

I _A /I _N		Type	Fig.	A	B	C	D	E	Holes		F	H	I	L	M	N	Capacitor (µF)		Cable entry thread
50 Hz	60 Hz								øG	N°							220 V 50 Hz	115 V 60 Hz	
1.78	1.95	MVSS 15/35-S02	W	209	151	125	62-74**	106	9	4	10	61	45	100	102	117	-	-	M20x1.5
1.78	1.95	MVSS 15/80-S02	W	225	151	125	62-74**	106	9	4	10	61	53	100	102	117	-	-	M20x1.5
1.78	1.95	MVSS 15/100-S02	W	241 (50Hz) 225 (60Hz)	151	125	62-74**	106	9	4	10	61	61 (50Hz) 53 (60Hz)	100	102	117	-	-	M20x1.5
2.34	2.75	MVSS 15/200-S02	W	295	176	152	90	125	13	4	12	73	74	124	122	141	-	-	M20x1.5
3.33	3.50	MVSS 15/400-S02	W	340	200	167	105	140	13	4	15	82.5	91	143	137	160	-	-	M25x1.5
3.33	3.50	MVSS 15/550-S02	W	380	200	167	105	140	13	4	15	82.5	111	143	137	160	-	-	M25x1.5
3.48	3.43	MVSS 15/700-S08	W	378	205	205	120	170	17	4	17	93.5	98	168	160	182	-	-	M25x1.5
4.45	4.89	MVSS 15/1100-S02	W	436	232	205	120	170	17	4	20	104.5	118	181	162	203	-	-	M25x1.5
4.10	4.20	MVSS 15/1410-S02	W	438	245	230	140	190	17	4	25	116	103	201	180	225	-	-	M25x1.5
4.29	4.89	MVSS 15/1710-S02	W	490	245	230	140	190	17	4	25	116	129	201	180	225	-	-	M25x1.5
4.30	4.90	MVSS 15/2000-S02	W	560	245	230	140	190	17	4	25	116	164	201	180	225	-	-	M25x1.5
6.09	7.23	MVSS 15/2410-S02	W	525	285	275	155	225	22	4	30	135	131	231	205	253	-	-	M25x1.5
6.50	7.50	MVSS 15/3000-S02	W	601	285	275	155	225	22	4	30	135	169	231	205	253	-	-	M25x1.5
7.11	6.92	MVSS 15/3810-S02	W	589	323	310	155	255	23.5	4	35	155	139.5	269	215	295	-	-	M25x1.5
5.90	7.10	MVSS 15/4300-S02	W	589	323	310	155	255	23.5	4	35	155	139.5	269	215	295	-	-	M25x1.5
1.20	1.30	MVSS 15/35-S02	W	209	151	125	62-74**	106	9	4	10	61	45	100	102	117	3.15	25	M20x1.5
1.20	1.30	MVSS 15/80-S02	W	225	151	125	62-74**	106	9	4	10	61	53	100	102	117	3.15	25	M20x1.5
1.20	1.30	MVSS 15/100-S02	W	241 (50Hz) 225 (60Hz)	151	125	62-74**	106	9	4	10	61	61 (50Hz) 53 (60Hz)	100	102	117	3.15	25	M20x1.5
1.50	1.85	MVSS 15/200-S02	W	295	176	152	90	125	13	4	12	73	74	124	122	141	5	25	M20x1.5
2.50	2.21	MVSS 15/400-S02	W	340	200	167	105	140	13	4	15	82.5	91	143	137	160	32/12 ◯	35	M25x1.5
2.50	2.21	MVSS 15/550-S02	W	380	200	167	105	140	13	4	15	82.5	111	143	137	160	32/12 ◯	40/35 ◯	M25x1.5
5.44	3.63	MVSS 15/700-S08	W	378	205	205	120	170	17	4	17	93.5	98	168	160	182	96/16 ◯	160/40 ◯	M25x1.5

I_A/I_N = ratio between start-up current and maximum current. ** Slot. ◯ Start-up capacitor / Running capacitor.

6 poles - 1000/1200 rpm

Description				Mechanical specifications								Electrical specifications				
Code	Type	SIZE		Static moment* kgmm		Centrifugal force				Weight kg		Max input power W		Max. current A		
				50 Hz	60 Hz	50 Hz	60 Hz	50 Hz	60 Hz	50 Hz	60 Hz	50 Hz	60 Hz	400 V 50 Hz	460 V 60 Hz	
three-phase	602283	MVSS 10/40-S02	10	•	30.1	30.1	35	49	0.33	0.47	12.5	12.5	120	135	0.30	0.30
	602284	MVSS 10/100-S02	10	•	84.2	84.2	94.3	136	0.93	1.33	15.8	15.8	120	135	0.30	0.30
	602285	MVSS 10/200-S02	20	•	163	163	183	264	1.80	2.59	22.5	22.5	185	205	0.50	0.50
	602405	MVSS 10/310-S08	30	•	286	209	321	338	3.15	3.32	32.0	30.0	350	380	0.72	0.68
	602417	MVSS 10/550-S08	35	•	457	457	512	737	5.02	7.23	41.0	41.0	350	380	0.75	0.68
	602408	MVSS 10/810-S08	40	•	723	561	809	905	7.84	8.88	54.0	52.6	680	760	1.40	1.35
	602409	MVSS 10/1110-S08	50	•	1012	715	1132	1151	11.1	11.3	67.0	59.5	750	750	1.65	1.50
	602410	MVSS 10/1400-S08	50	•	1274	904	1424	1485	14.0	14.5	78.0	71.0	950	1000	1.80	1.70
	602411	MVSS 10/1610-S08	60	•	1464	962	1638	1549	16.1	15.2	94.0	83.0	1100	1300	2.20	2.20
	602412	MVSS 10/2100-S08	60	•	1927	1318	2154	2102	21.1	20.6	105	93.0	1500	1700	3.00	2.90
	602293	MVSS 10/2610-S02	70	•	2326	1706	2601	2747	25.5	26.9	130	116	1960	2100	4.10	3.75
	602294	MVSS 10/3000-S02	70	•	2690	1940	3007	3124	29.5	30.6	145	130	2200	2400	4.50	4.30

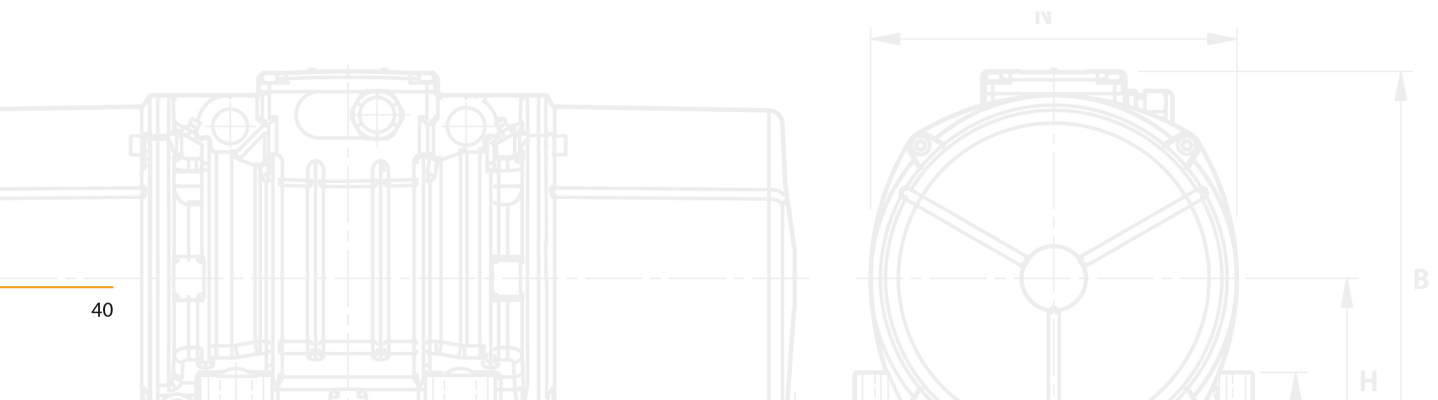
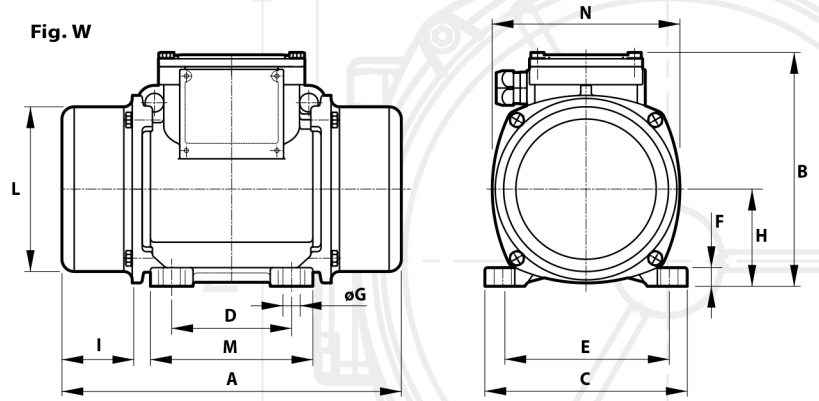


Fig. W



Dimensional specifications (mm)

I _m /I _n		Type	Fig.	A	B	C	D	E	Holes		F	H	I	L	M	N	Cable entry thread
50 Hz	60 Hz								øG	N°							
1.90	2.07	MVSS 10/40-S02	W	255	176	152	90	125	13	4	12	73	54	124	122	141	M20x1.5
1.90	2.07	MVSS 10/100-S02	W	295	176	152	90	125	13	4	12	73	74	124	122	141	M20x1.5
2.72	3.10	MVSS 10/200-S02	W	340	200	167	105	140	13	4	15	82.5	91	143	137	160	M25x1.5
2.63	2.79	MVSS 10/310-S08	W	378	205	205	120	170	17	4	17	93.5	98	168	160	182	M25x1.5
2.53	3.68	MVSS 10/550-S08	W	436	232	205	120	170	17	4	20	104.5	118	181	162	203	M25x1.5
2.79	3.33	MVSS 10/810-S08	W	490 (50Hz) 438 (60Hz)	245	230	140	190	17	4	25	116	129 (50Hz) 103 (60Hz)	201	180	225	M25x1.5
3.33	4.13	MVSS 10/1110-S08	W	560	245	230	140	190	17	4	25	116	164	201	180	225	M25x1.5
3.05	3.65	MVSS 10/1400-S08	W	560	245	230	140	190	17	4	25	116	164	201	180	225	M25x1.5
4.21	4.05	MVSS 10/1610-S08	W	601 (50Hz) 525 (60Hz)	285	275	155	225	22	4	30	135	169 (50Hz) 131 (60Hz)	231	205	253	M25x1.5
4.50	4.20	MVSS 10/2100-S08	W	655 (50Hz) 601 (60Hz)	285	275	155	225	22	4	30	135	196 (50Hz) 169 (60Hz)	231	205	253	M25x1.5
5.35	5.60	MVSS 10/2610-S02	W	657 (50Hz) 589 (60Hz)	323	310	155	255	23.5	4	35	155	173.5 (50Hz) 139.5 (60Hz)	269	215	295	M25x1.5
4.35	4.81	MVSS 10/3000-S02	W	706	323	310	155	255	23.5	4	35	155	198	269	215	295	M25x1.5

MVSS



CESI KIE



8 poles - 750/900 rpm

Description				Mechanical specifications								Electrical specifications				
Code	Type	SIZE	SA	Static moment* kgmm		Centrifugal force				Weight kg		Max input power W		Max. current A		
				50 Hz	60 Hz	50 Hz	60 Hz	50 Hz	60 Hz	50 Hz	60 Hz	50 Hz	60 Hz	400 V 50 Hz	460 V 60 Hz	
three-phase	602561	MVSS 075/150-S02	20	•	163	163	104	149	1.02	1.46	22.5	22.5	230	250	0.85	0.76
	602617	MVSS 075/250-S08	30	•	286	286	181	260	1.76	2.55	32.0	32.0	350	380	1.10	1.05
	602647	MVSS 075/260-S08	35	•	275	275	174	250	1.71	2.45	34.5	34.5	375	410	0.81	0.80
	602627	MVSS 075/400-S08	35	•	457	457	288	415	2.83	4.07	41.0	41.0	375	410	0.81	0.80
	602620	MVSS 075/660-S08	40	•	723	723	456	656	4.47	6.44	54.0	54.0	400	450	1.20	1.20
	602621	MVSS 075/910-S08	50	•	1012	1012	637	917	6.25	9.00	67.0	67.0	400	500	1.40	1.30
	602622	MVSS 075/1310-S08	60	•	1464	1464	922	1327	9.04	13.0	94.0	94.0	950	1100	2.20	2.20
	602567	MVSS 075/2110-S02	70	•	2326	2326	1463	2107	14.4	20.7	130	130	1500	1790	4.10	4.20

* Working moment = 2 x static moment.

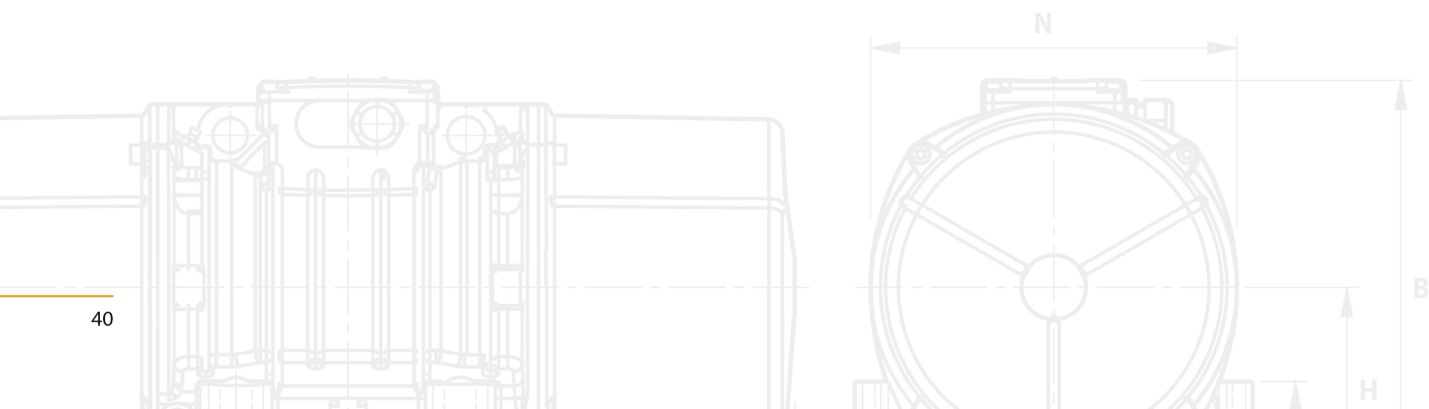
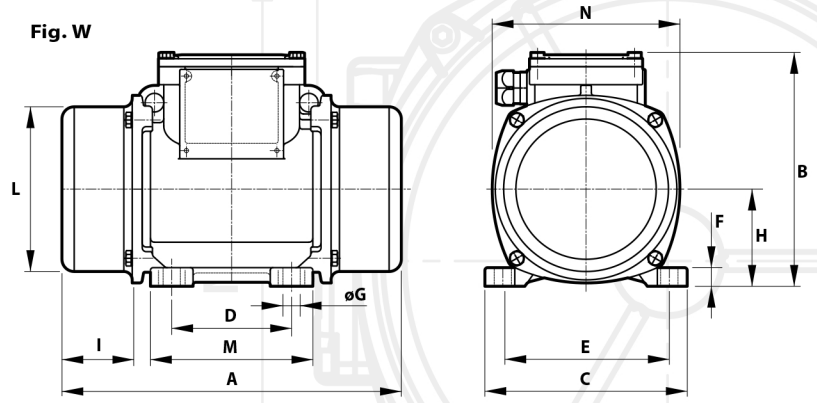


Fig. W



Dimensional specifications (mm)

I_A/I_N		Type	Fig.	A	B	C	D	E	Holes		F	H	I	L	M	N	Cable entry thread
50 Hz	60 Hz								ϕG	N°							
2.13	2.11	MVSS 075/150-S02	W	340	200	167	105	140	13	4	15	82.5	91	143	137	160	M25x1.5
2.03	2.29	MVSS 075/250-S08	W	378	205	205	120	170	17	4	17	93.5	98	168	160	182	M25x1.5
2.22	2.94	MVSS 075/260-S08	W	354	232	205	120	170	17	4	20	104.5	77	181	162	182	M25x1.5
2.22	2.38	MVSS 075/400-S08	W	436	232	205	120	170	17	4	20	104.5	118	181	162	203	M25x1.5
2.38	2.58	MVSS 075/660-S08	W	490	245	230	140	190	17	4	25	116	129	201	180	225	M25x1.5
2.38	2.85	MVSS 075/910-S08	W	560	245	230	140	190	17	4	25	116	164	201	180	225	M25x1.5
2.63	3.41	MVSS 075/1310-S08	W	601	285	275	155	225	22	4	30	135	169	231	205	253	M25x1.5
3.55	2.95	MVSS 075/2110-S02	W	657	323	310	155	255	23.5	4	35	155	173.5	269	215	295	M25x1.5

I_A/I_N = ratio between start-up current and maximum current.